

**site description**

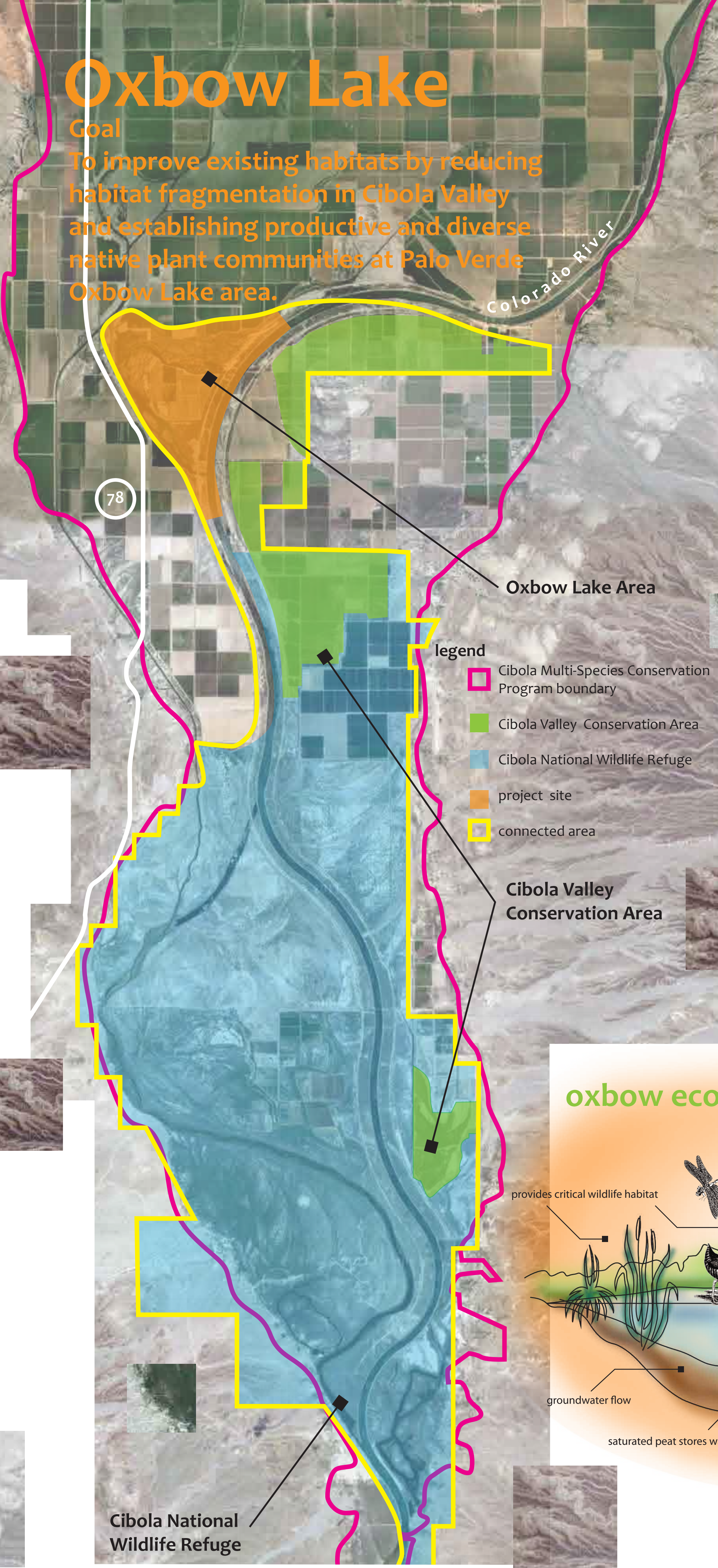
Palo Verde Oxbow Lake is located in the Lower Colorado River basin, south of Palo Verde.

The lake used to be an old river meander which was cut off in 1967 during the Colorado river diversion. The channel with a seeping water source was left to mitigate wildlife habitat.

The project area consists of the old river channel, the 'island' between the lake and the river. It expands to the Cibola Conservation Area to the east and the Cibola NWR to the south.

# Oxbow Lake

**Goal**  
To improve existing habitats by reducing habitat fragmentation in Cibola Valley and establishing productive and diverse native plant communities at Palo Verde Oxbow Lake area.



**issues**

- agriculture**  
contaminated runoff from adjacent agriculture fields
- habitat fragmentation**  
oxbow lake area, CCA and CNWR are disconnected
- low quality habitat**
- limited plant diversity**
- invasive plant species**

**opportunities**

- proximity**  
to important ecological areas
- topography**  
allows to be flooded
- location and existing conditions**  
allow to store and control entering water
- better conditions**  
can be provided for interior habitat due to the island's nature



oxbow lake campground

dirt road by oxbow lake

the colorado river

oxbow lake

**Reach Scale Concept**

- Connect Oxbow Lake Area with Cibola Valley Conservation Area and Cibola NWR
- Extend Cibola NWR habitat area
- Enhance Cibola Valley Conservation Area by applying 'natural' pattern to native species planted areas
- Remove agriculture fields from the island

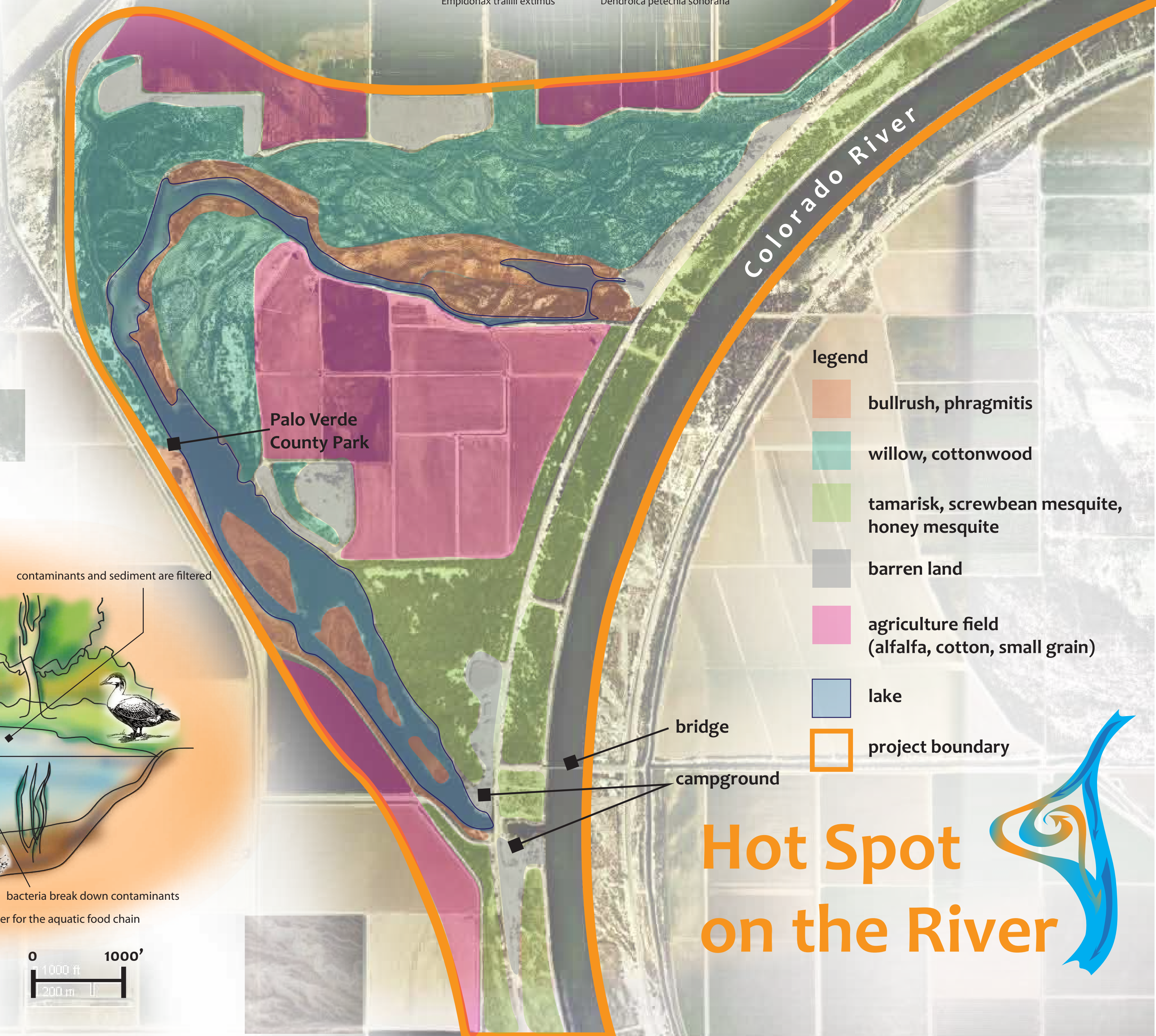
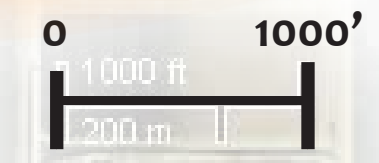
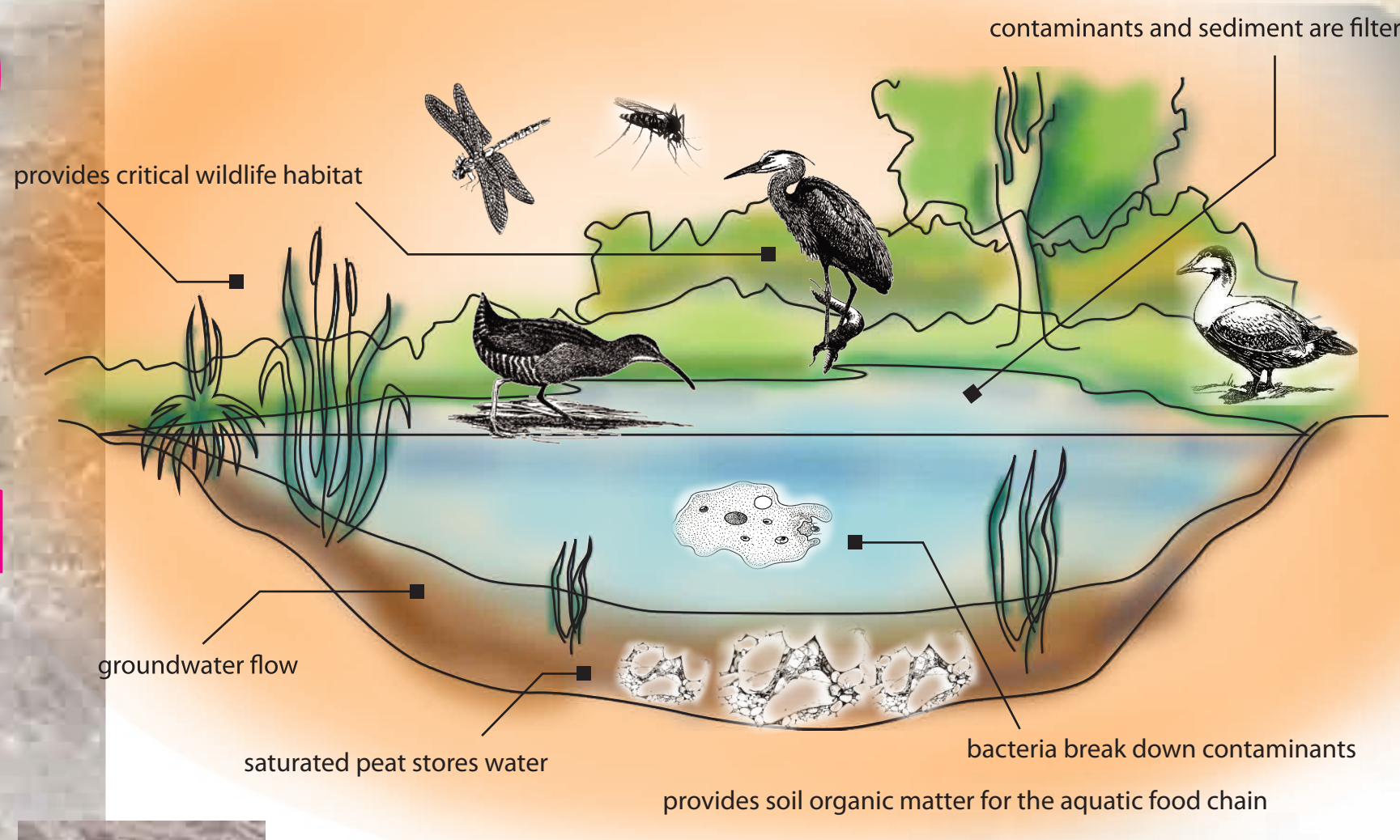
**species utilizing the site**



Southwestern Willow Flycatcher  
*Empidonax traillii eximius*

Sonoran Yellow Warbler  
*Dendroica petechia sonora*

**oxbow ecology**



**Hot Spot on the River**





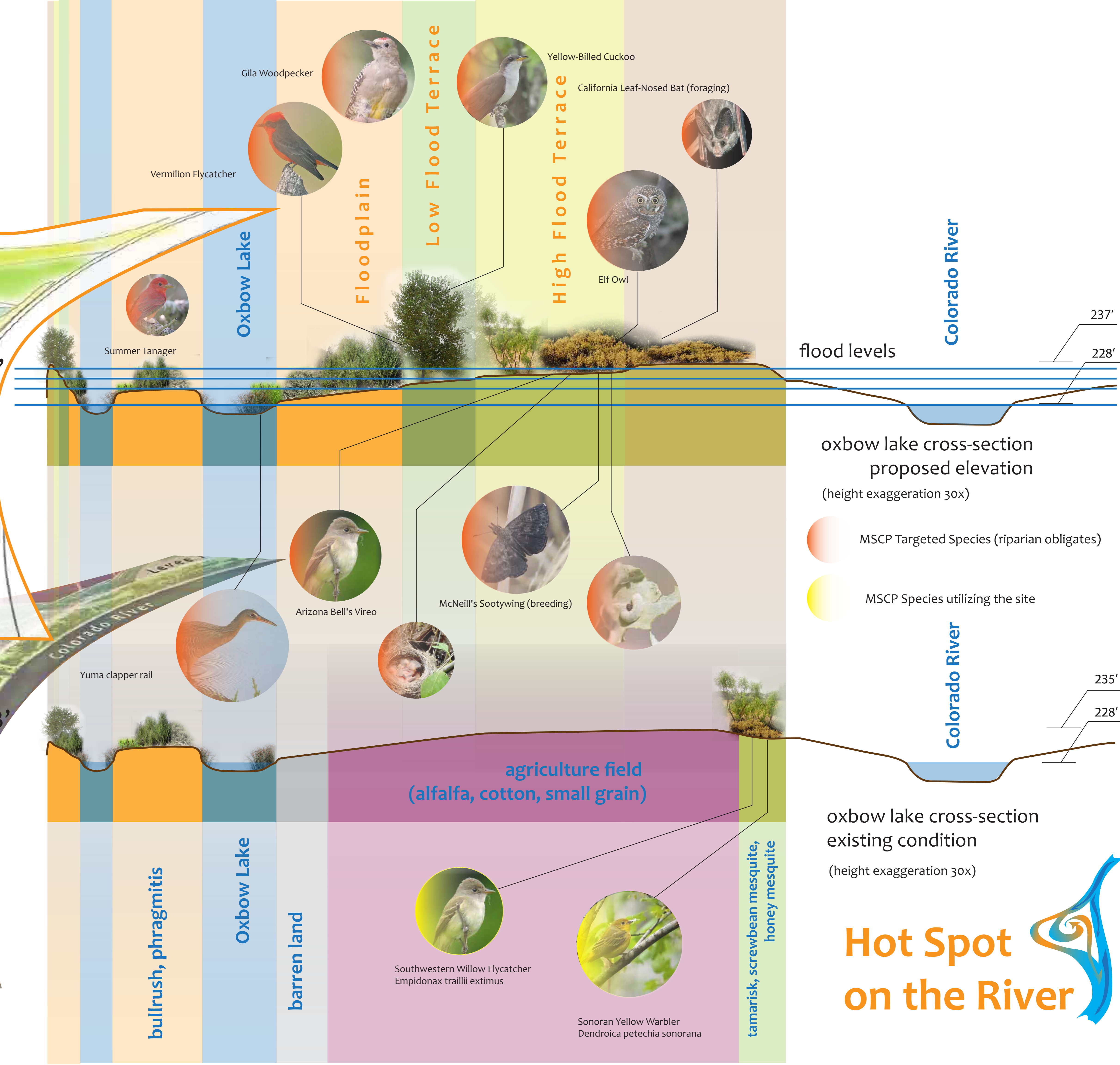
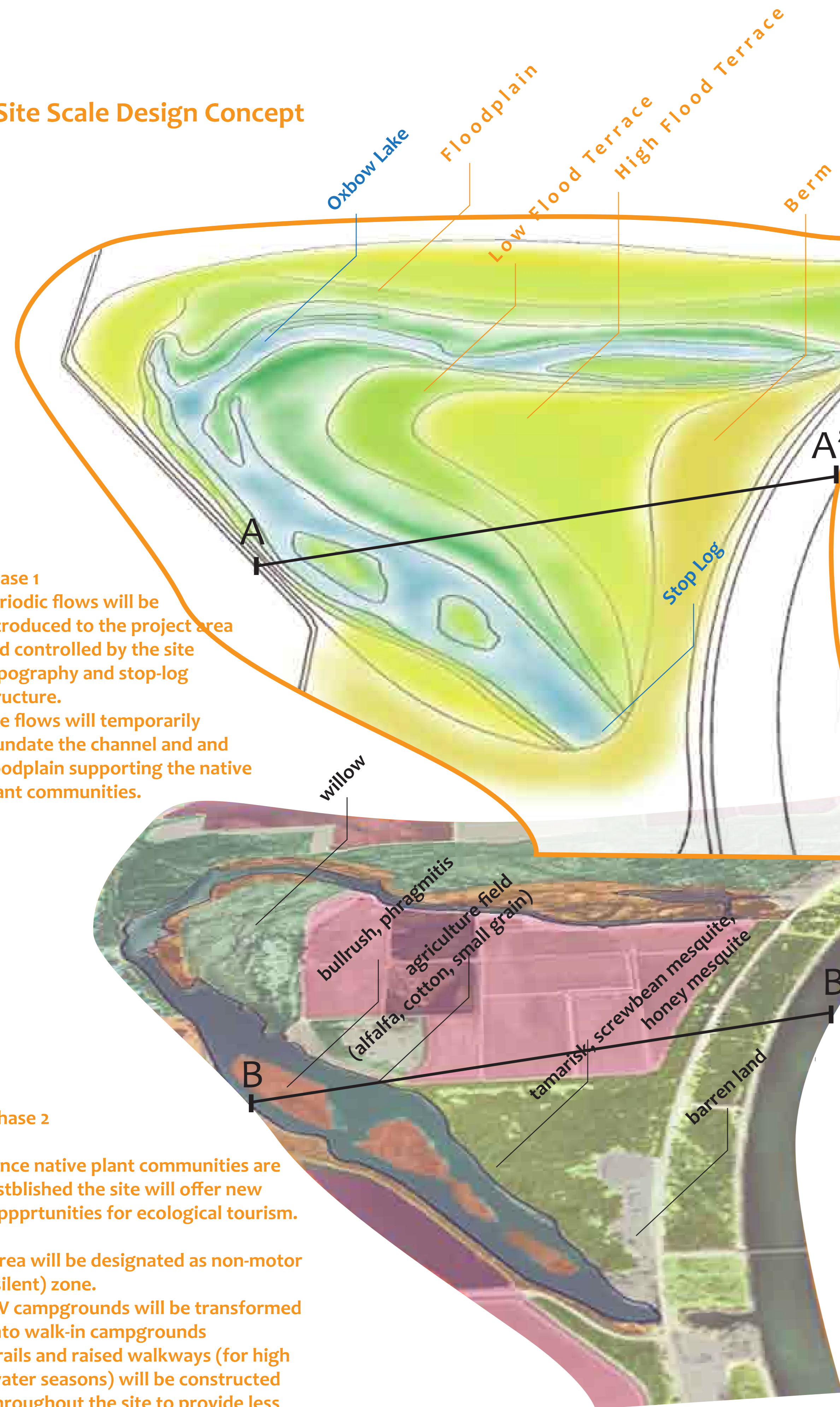
# Oxbow Lake

## Site Scale Design Concept

**Phase 1**  
 Periodic flows will be introduced to the project area and controlled by the site topography and stop-log structure. The flows will temporarily inundate the channel and floodplain supporting the native plant communities.

**Phase 2**  
 Once native plant communities are established the site will offer new opportunities for ecological tourism.

Area will be designated as non-motor (silent) zone. RV campgrounds will be transformed into walk-in campgrounds. Trails and raised walkways (for high water seasons) will be constructed throughout the site to provide less intrusive observation.



# Hot Spot on the River

