

Reducing Water From External Sources



PERSHING SQUARE

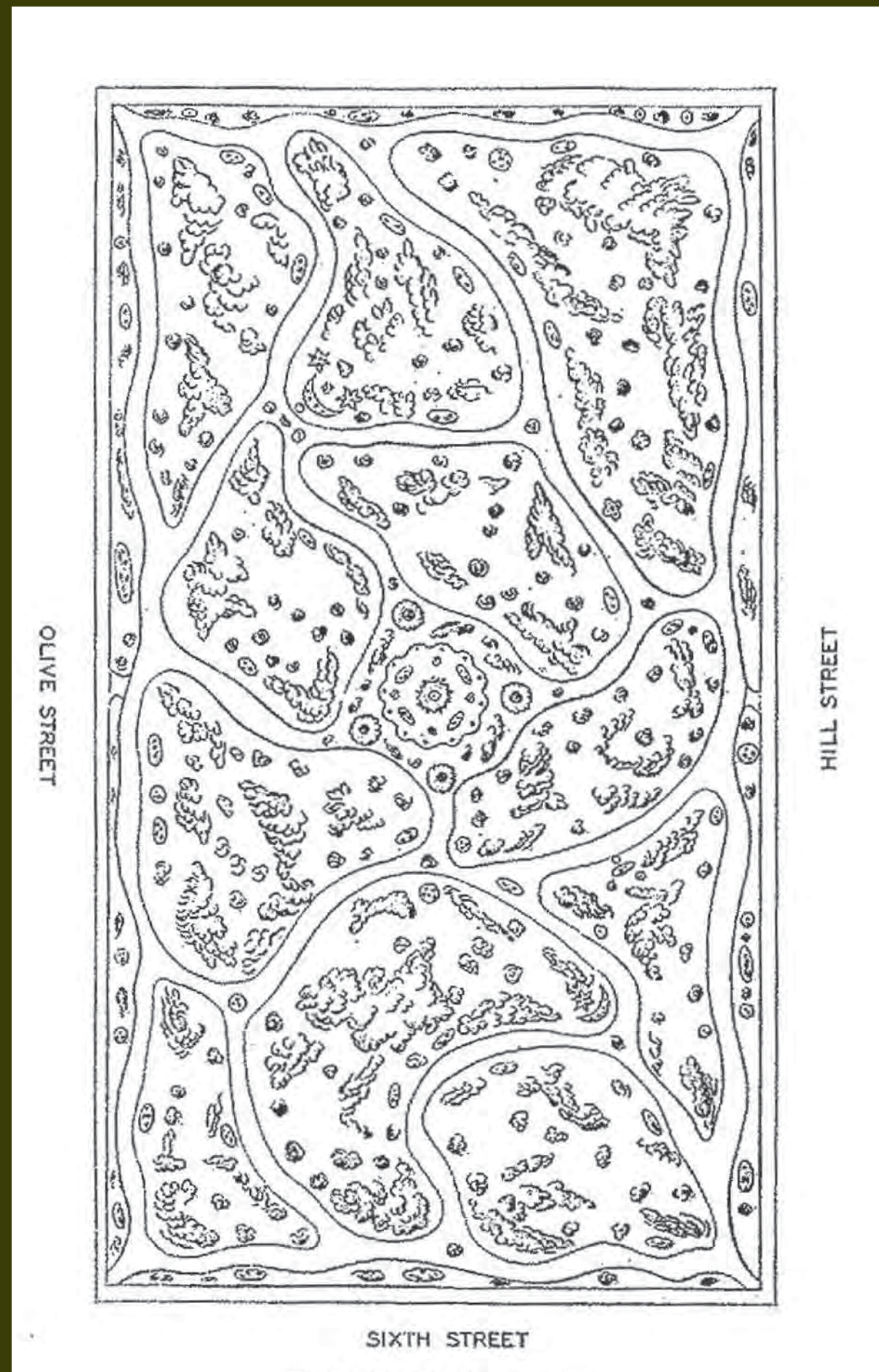
Downtown Los Angeles

Laura Razo
Jessica Hall

LA 602
March 2, 2012

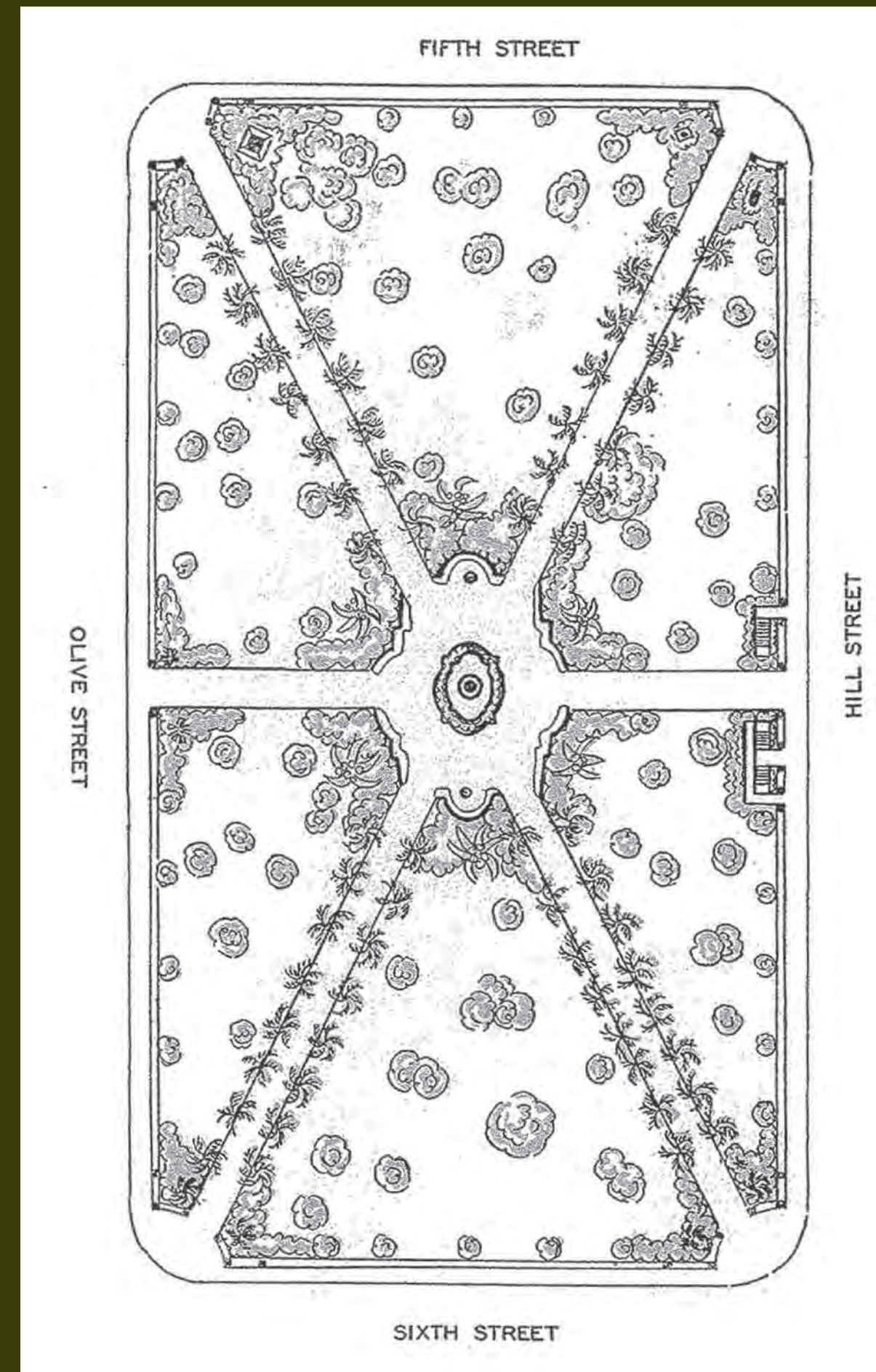
Early History

1886 Eaton Plan



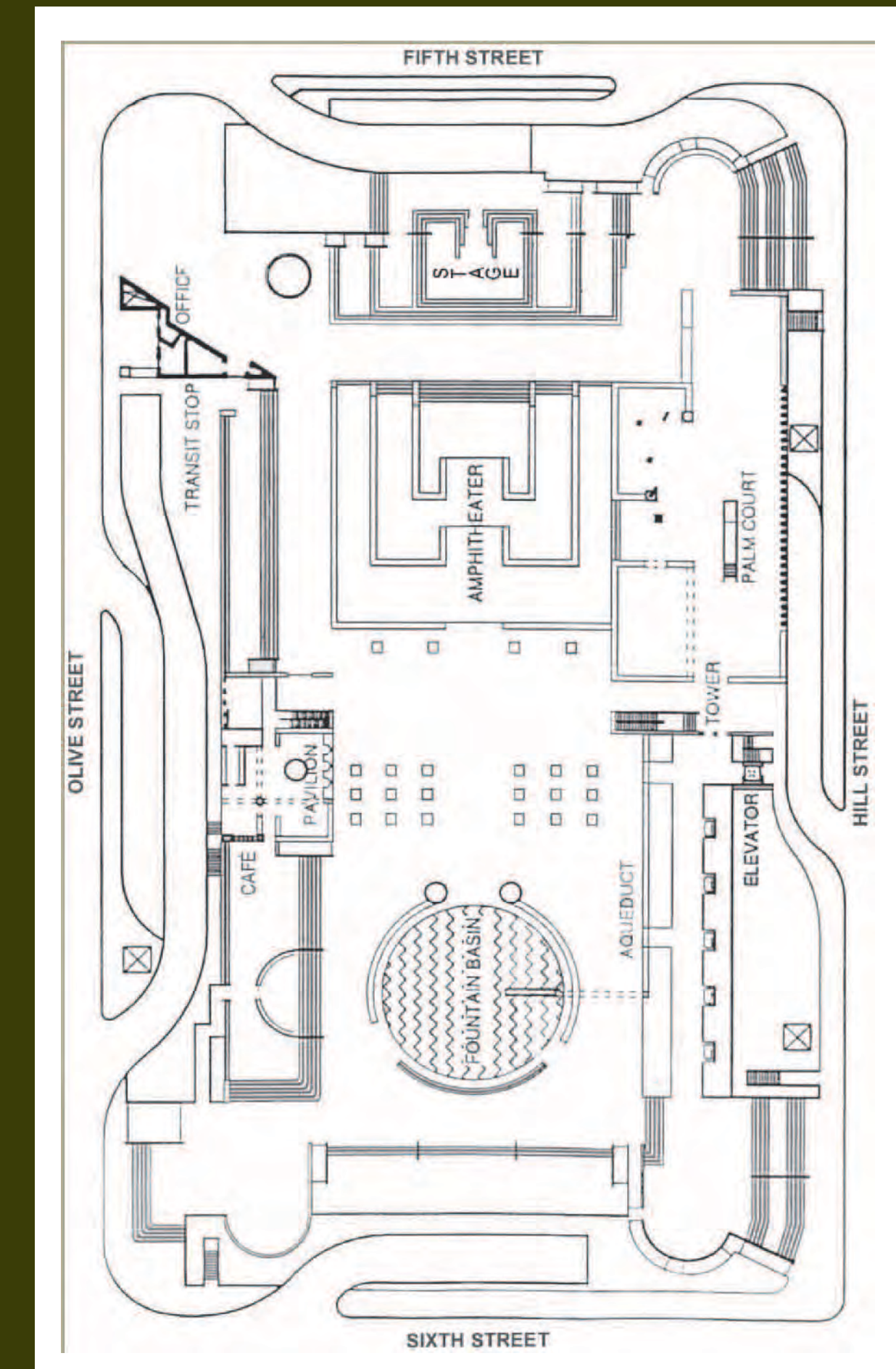
First official plan for "Los Angeles Park." Designed by City Engineer Fred Eaton. Informal design with gravel pathways, plots of grass, and flower beds shaped like stars and crescents. Benches were lined up along the walkways. In the center of the park was a bandstand where concerts were held on Saturday nights and Sunday afternoons. In a 1904 revision to the park layout of some of the walkways and planting areas were changed and trees were planted around the bandstand.

1931 Parkinson Plan



Designed by architect John Parkinson in 1910. This design was a more formal, beaux arts plan with classic walkways, a central fountain, lush plantings, and ornamental corner balustrades. The perimeter walkways from the original design were maintained. In 1918 the name of the park is changed to Pershing Square in honor of World War I hero General John J. Pershing. In 1931 architects John and Donald Parkinson update the plan while constructing the Title Guarantee and Trust Building.

1994 Legoretta Plan



The design features two plazas. The upper plaza has an orange grove and a courtyard where the historic statues are displayed. The lower plaza features a large fountain and bell tower. Design is inspired by Mexican architecture and folk art. Despite rave reviews and many high hopes that the new square will usher in a new era for downtown, the success of the project is short-lived. The square continues to suffer from many of the same problems it had previously. It continues to be a draw for homeless people. In the early 2000s the City of Los Angeles develops a variety of activities, including a summer concert series and ice skating in the winter. With the ongoing evolution of downtown and new populations moving into residential projects, there is a new and pressing need for the revitalization of the square.

PERSHING SQUARE

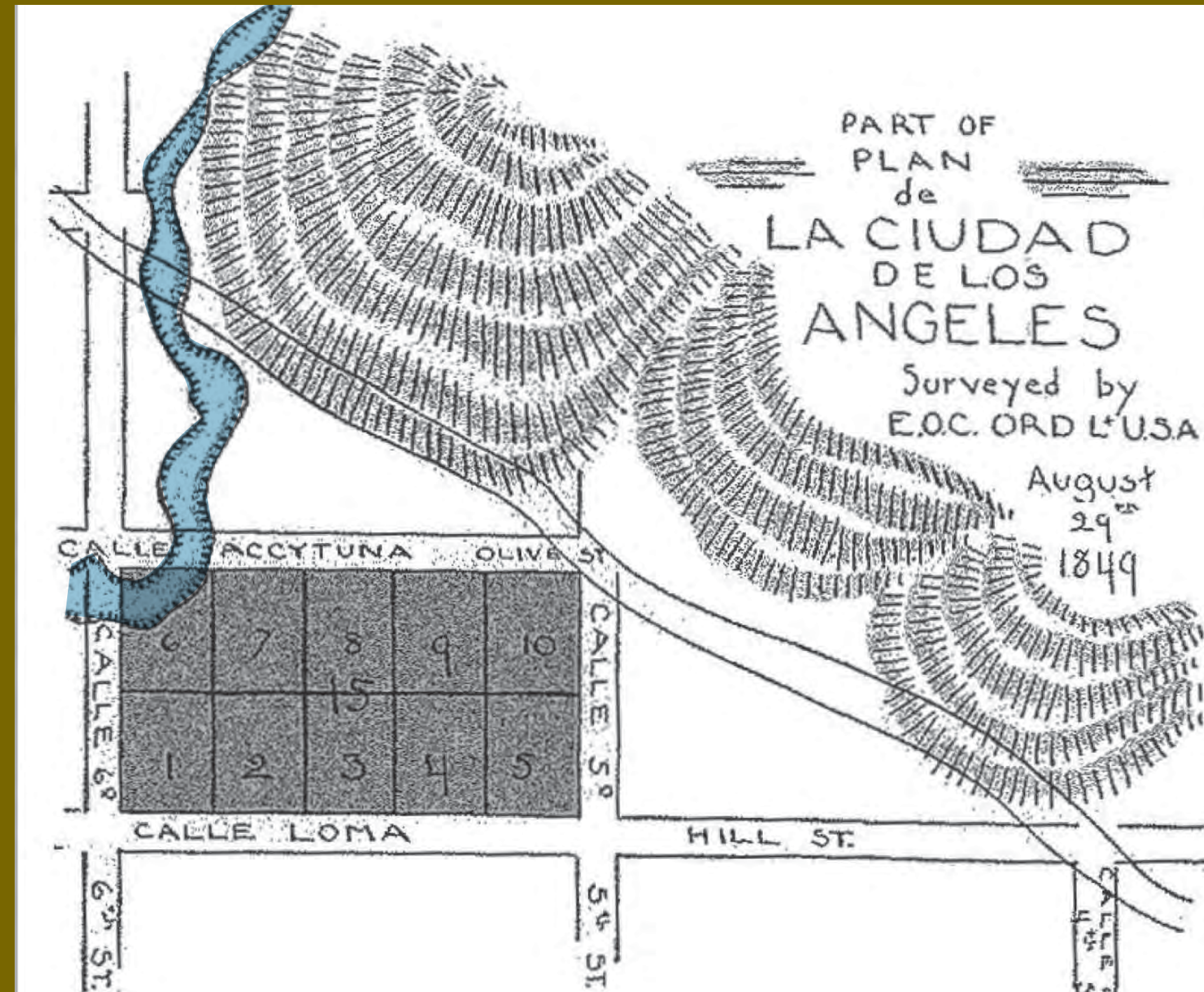
Downtown Los Angeles

LA 602

March 15, 2012

The Lost Stream

1849 Lt. Ord Survey of the original Pueblo



1992 City of Los Angeles Drainage Map No 516



Near the corner of Sixth and Olive Street is the Arroyo de los Reyes, which floods during the rainy season and creates a public nuisance.

Around 1864, the municipal zanja, which brings water to homes from the river, is constructed through the park near Fifth Street

The Municipal "zanja" no. 8 carried water through the park from 1864 until the turn of the century.



The Municipal "zanja" no. 8 is diverted to an underground pipeline system, now abandoned, and run-off is now collected by other storm drain lines.

PERSHING SQUARE

Downtown Los Angeles

LA 602

March 15, 2012

Existing Site

2012



Site Observations:

- Pungent smells from human and pet waste
- Unwelcoming environment
- Space feels too enclosed
- Unsafe
- Increase in undesirables
- Pedestrians traverse square to get from point A to point B
- Drainage in DG and planting areas is poor.
- Statues hidden (out of sight)
- No line of sight from street level
- Efforts to increase public use is short-lived again



PERSHING SQUARE

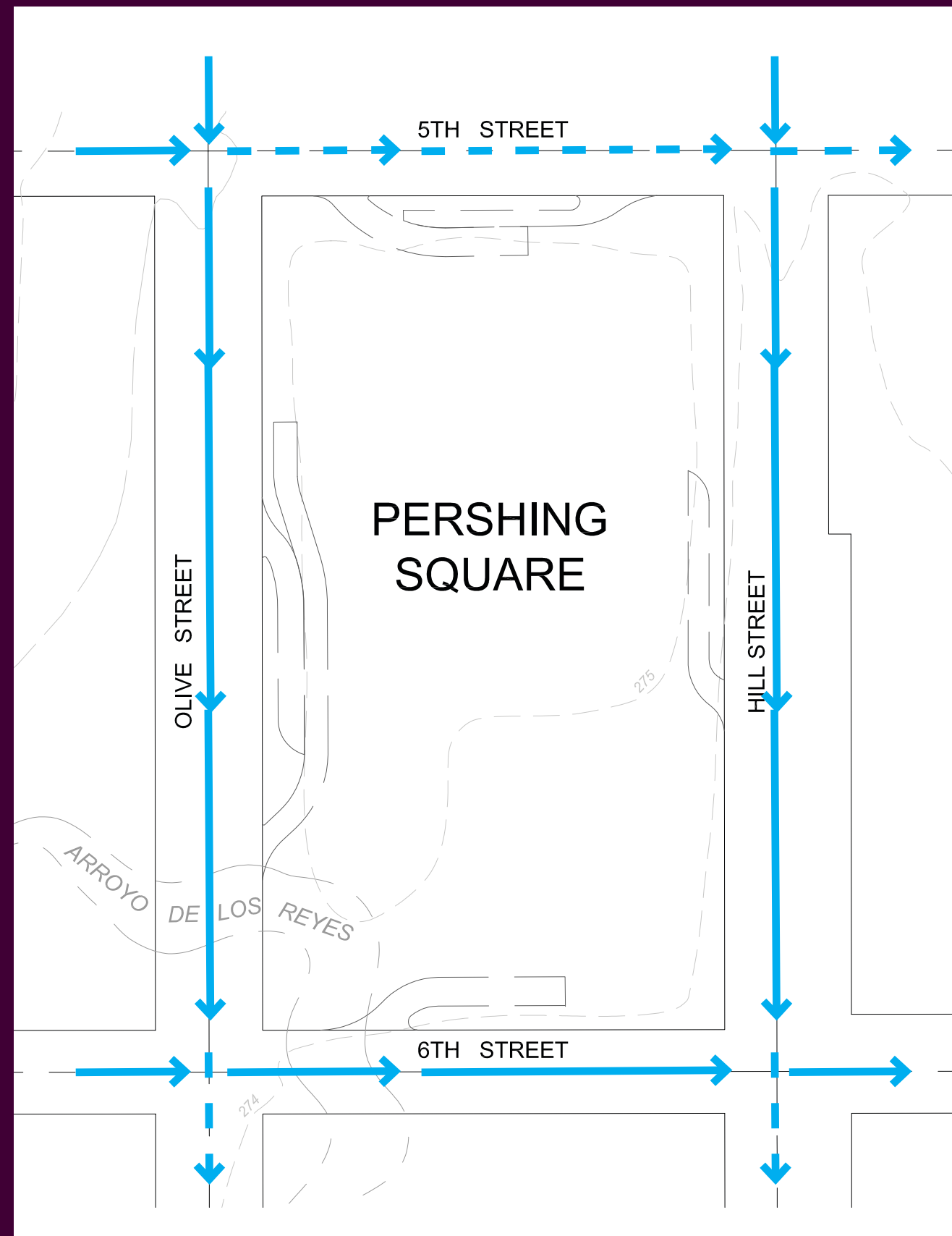
Downtown Los Angeles

LA 602

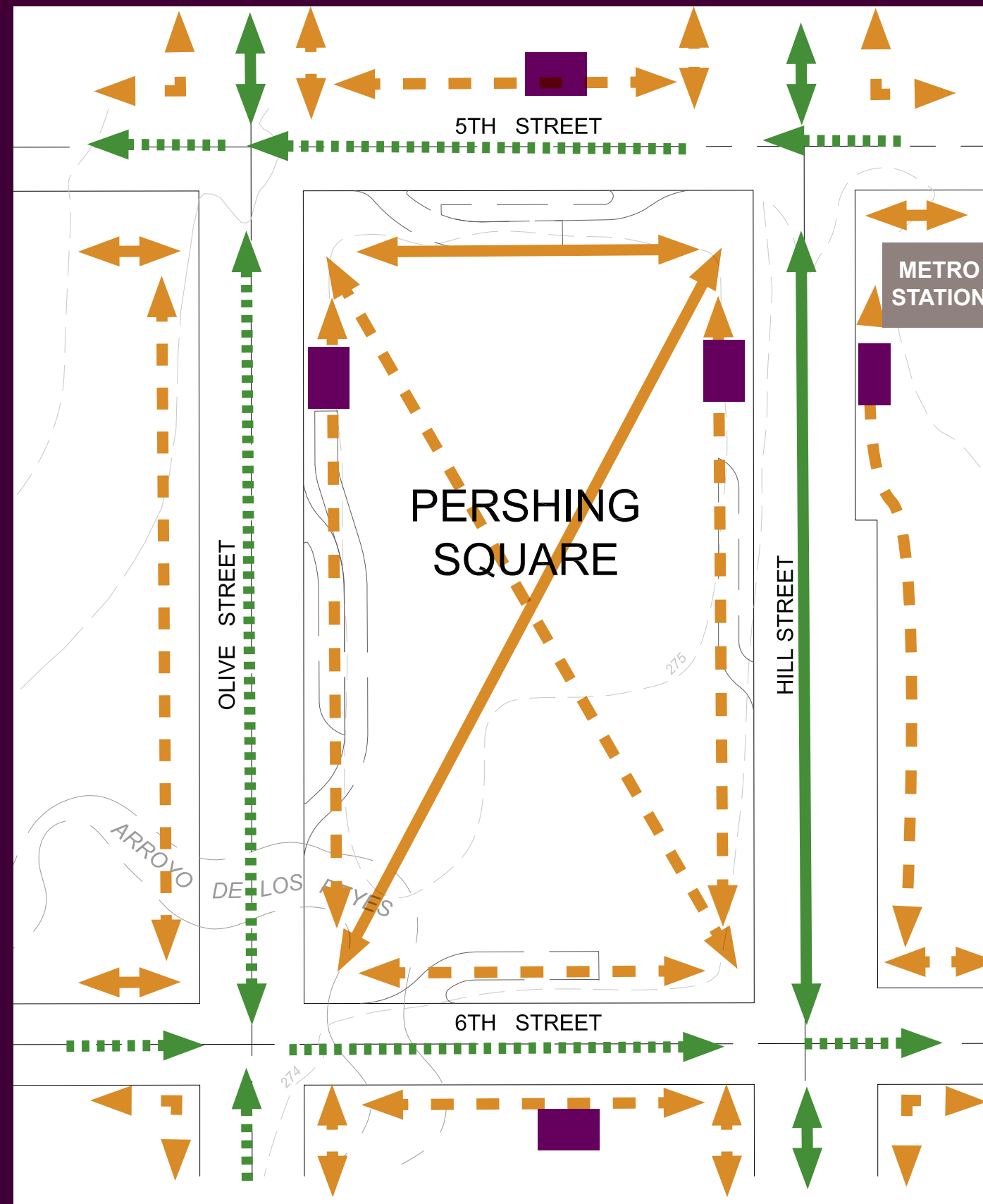
March 15, 2012

Existing Site

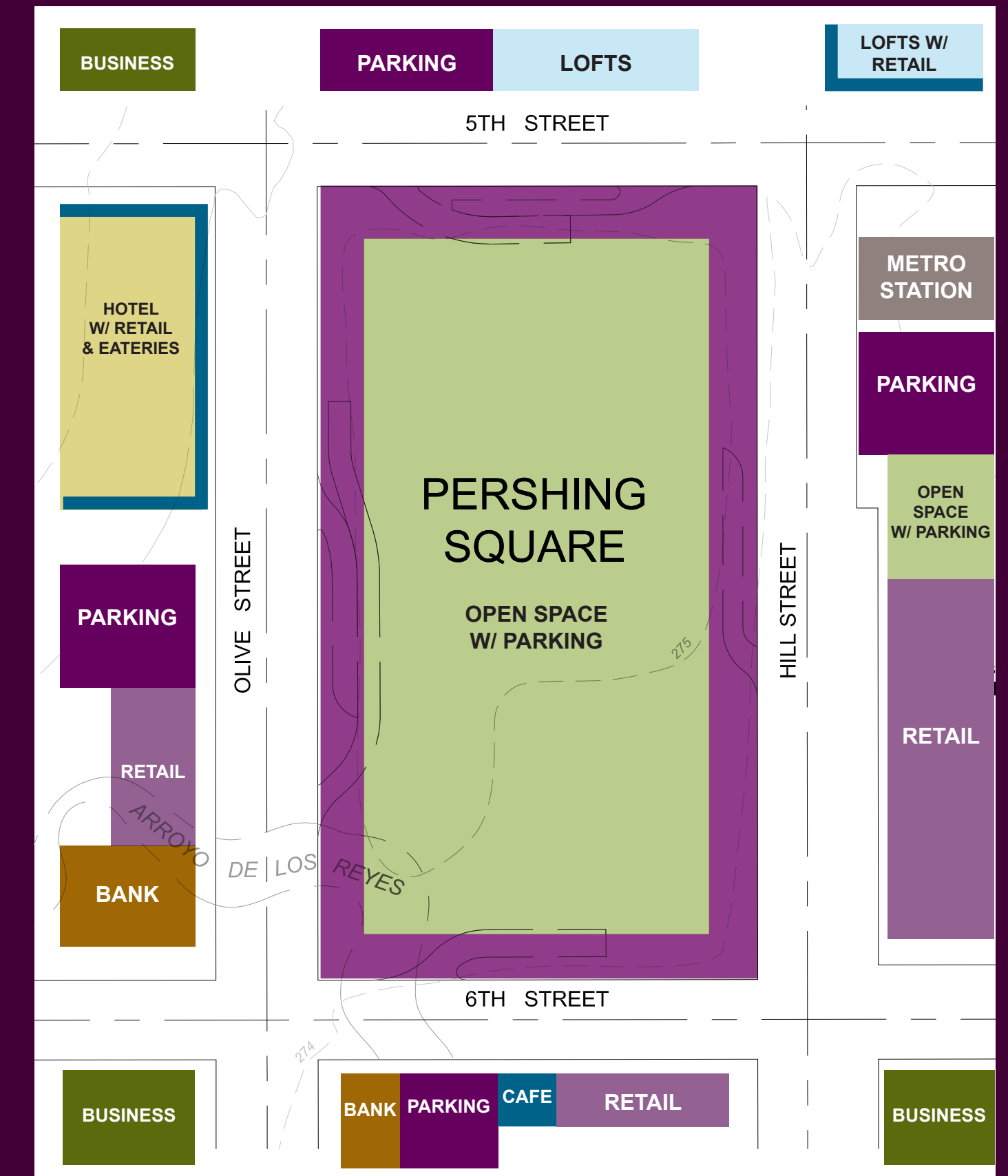
Patterns



Water Flows



Circulation



Adjacencies

PERSHING SQUARE

Downtown Los Angeles

LA 602

March 15, 2012

Design Intent: Learning from the Past

2012



In looking at past design and studying existing circulation and water flow patterns, I have incorporated the 160's design with other elements to make it more sustainable as well as designing towards water capture to become a self sustaining park. The water run-off that is captured will be used for irrigation on site. This will contribute in the reduction of water intake from the Colorado River. Removing all existing walls and providing line of sight across the park will make it a more inviting public space.

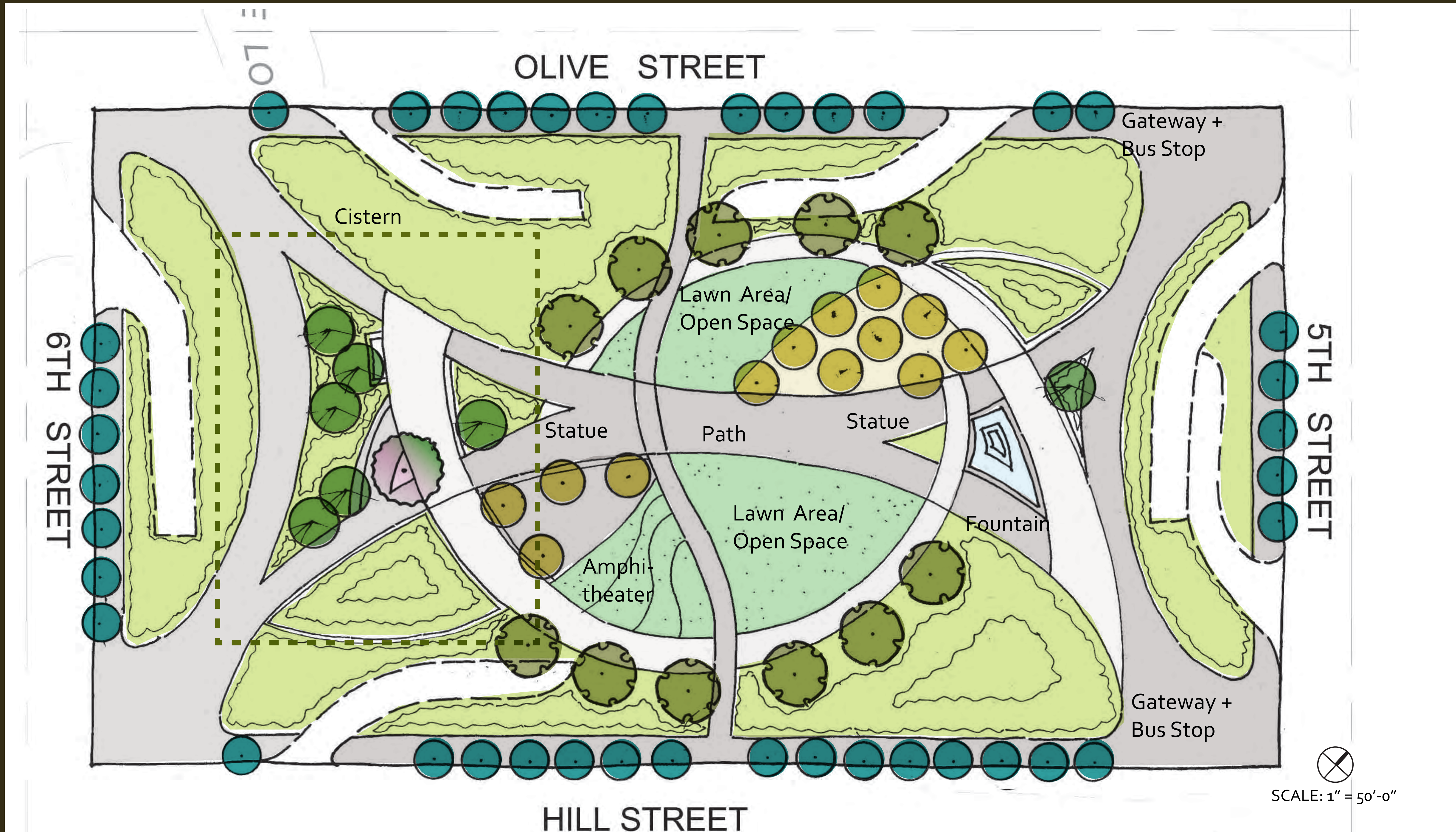
PERSHING SQUARE

Downtown Los Angeles

LA 602

March 15, 2012

Proposed Design



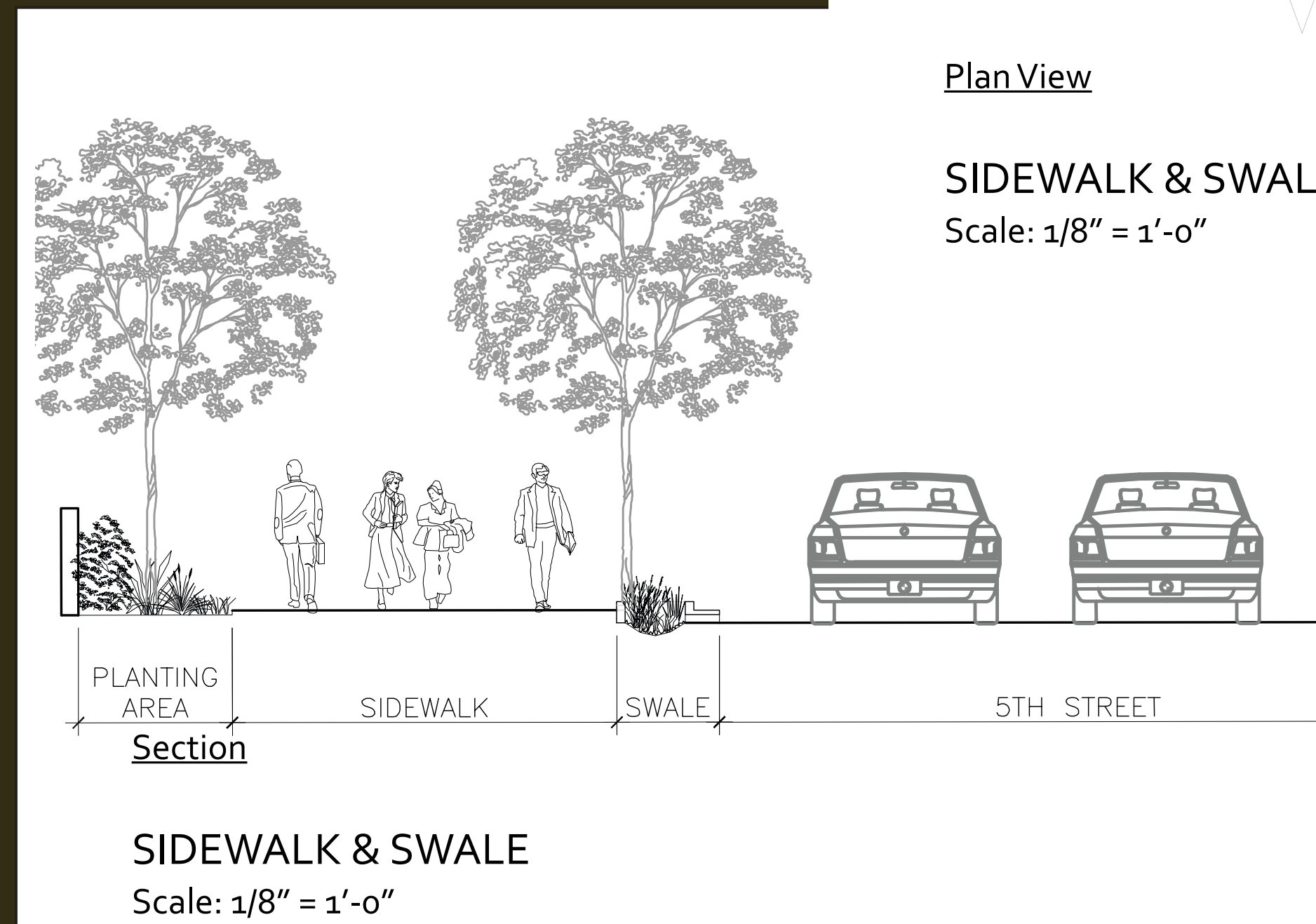
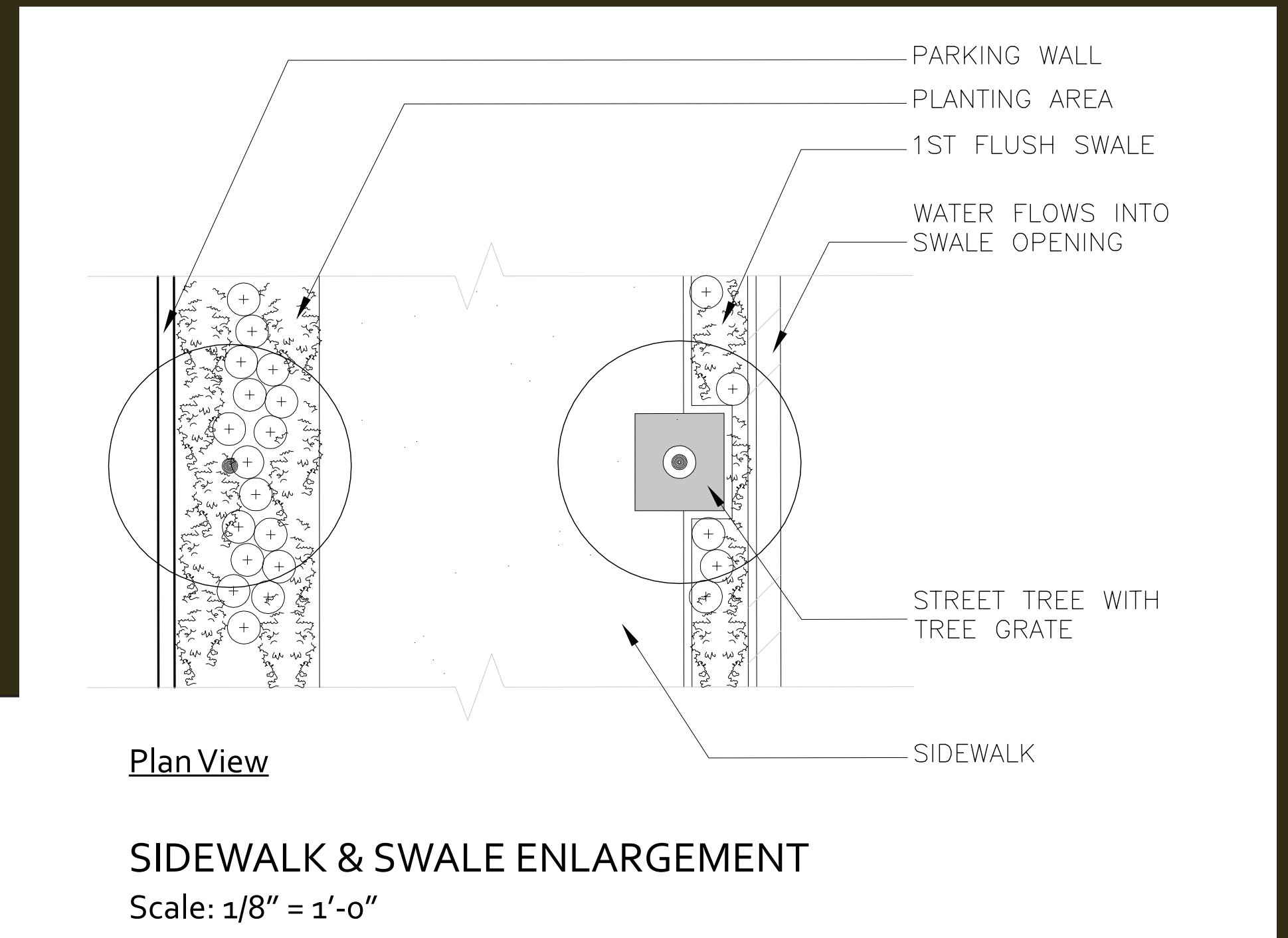
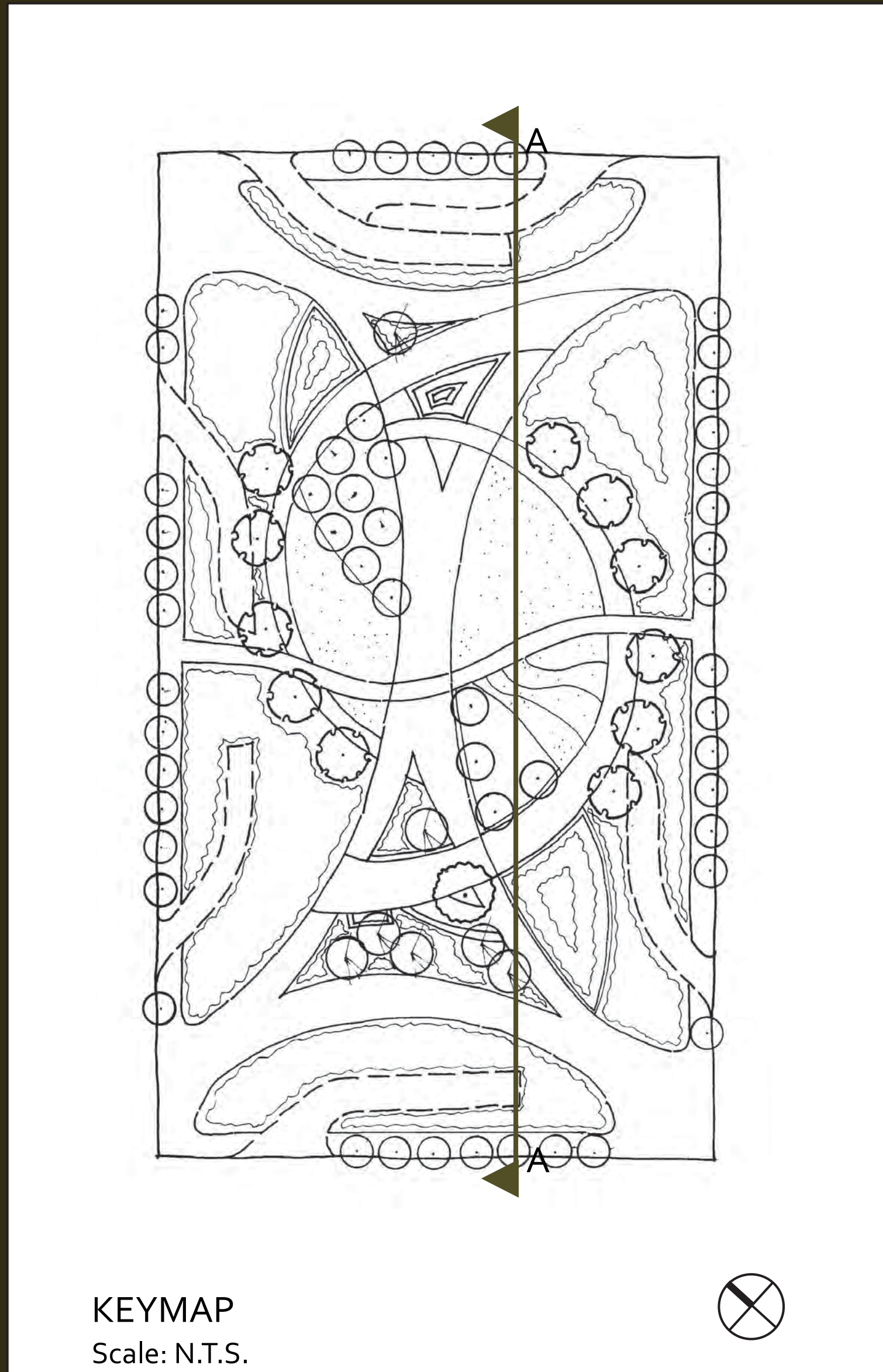
PERSHING SQUARE

Downtown Los Angeles

LA 602

March 15, 2012

Proposed Design - sections/elevations/enlargements



Proposed Design -sections/elevations



SECTION A-A
Scale: 1/16" = 1'-0"



SECTION A-A
Scale: 1/16" = 1'-0"

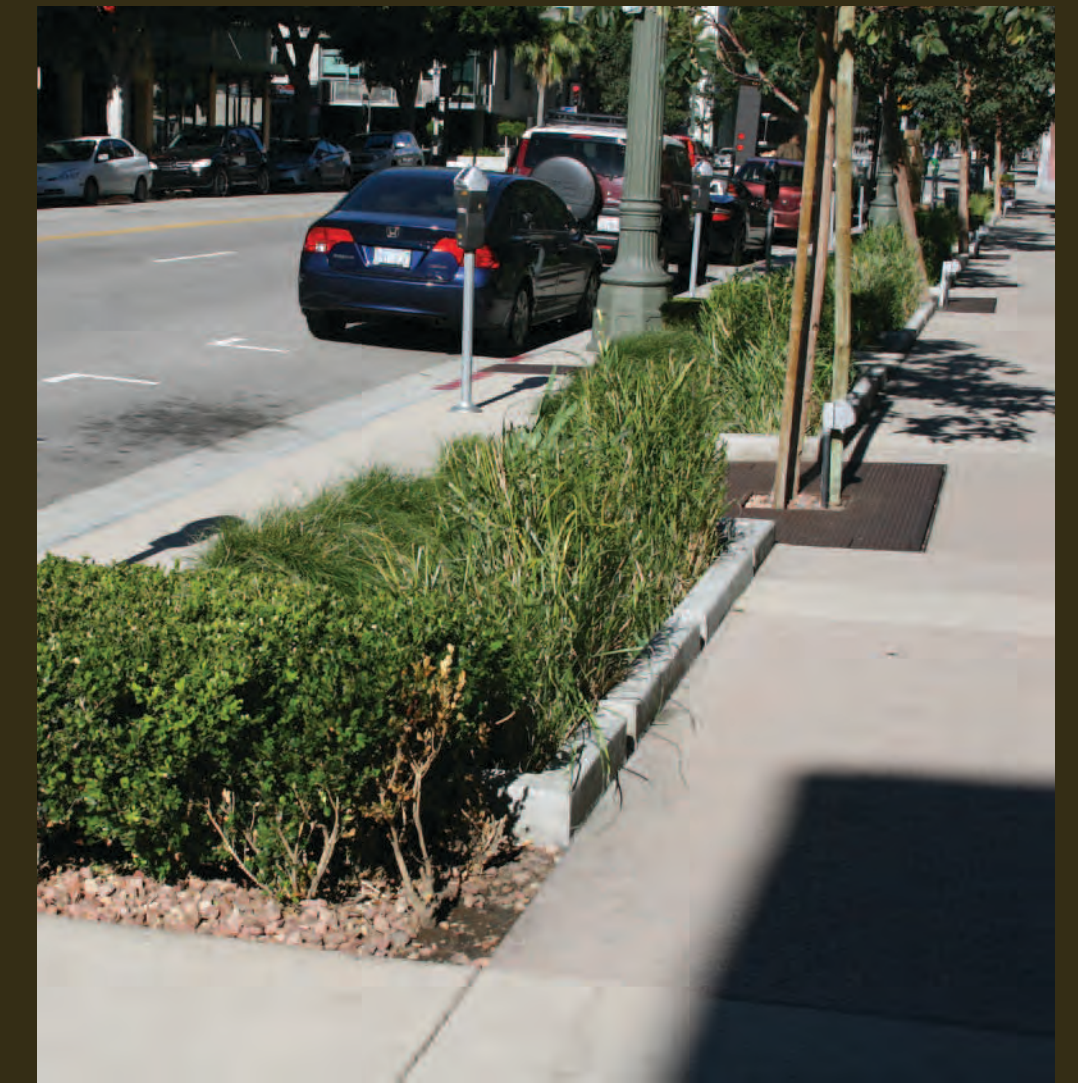
PERSHING SQUARE

Downtown Los Angeles

LA 602

March 15, 2012

Proposed Design



Design Elements:

- On-Site water capture for irrigation purposes
- Usable safe public space
- 'First-Flush' swales (retention and detention)
- Water-wise plant material
- Drip irrigation
- Street to street line of sight clearance
- Seating areas
- Accommodate seasonal activities
- Shade areas
- Integrate 'Arroyo de los Reyes' into design
- Water feature
- Address circulation needs
- Enhance bus stop locations

PERSHING SQUARE

Downtown Los Angeles

LA 602

March 15, 2012

Proposed Design - Plant Palette



Agave



Manzanita



Festuca



Carex



Ceanothus



Berberis



Aeonium



Nassella



Muhlenbergia



Eriogonum



Penstemon



Senecio



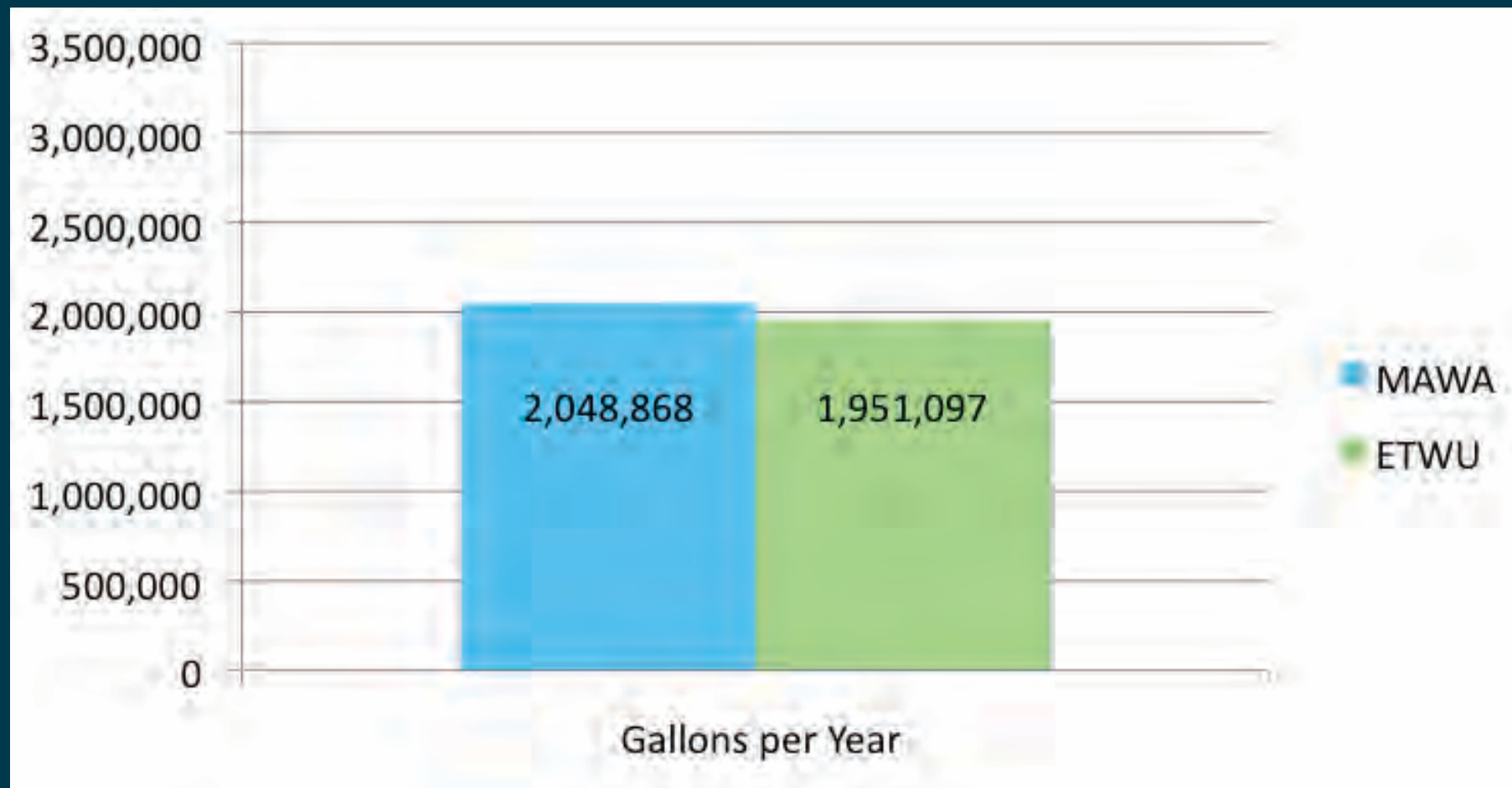
Mimulus



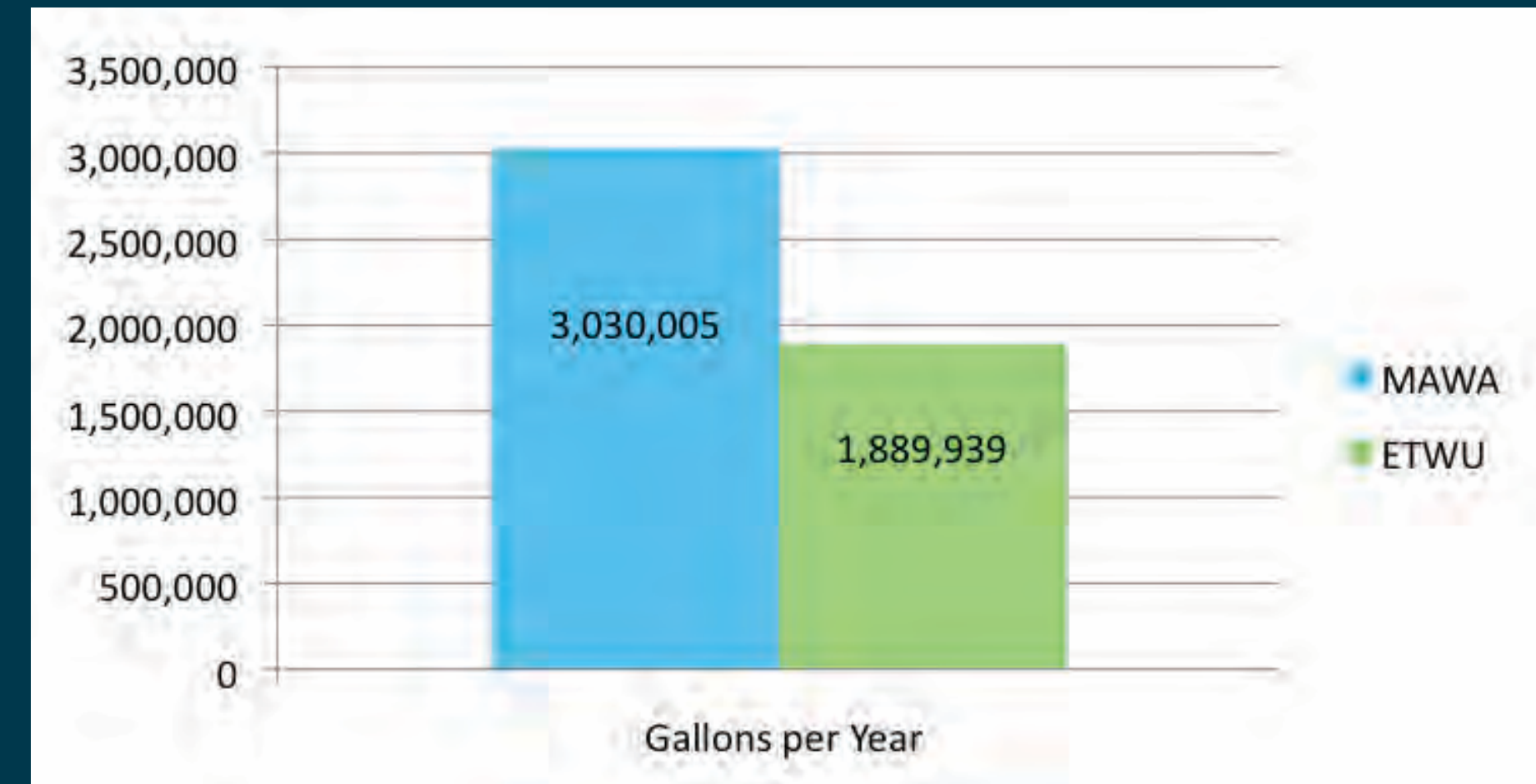
Eschscholzia

Water Calculations

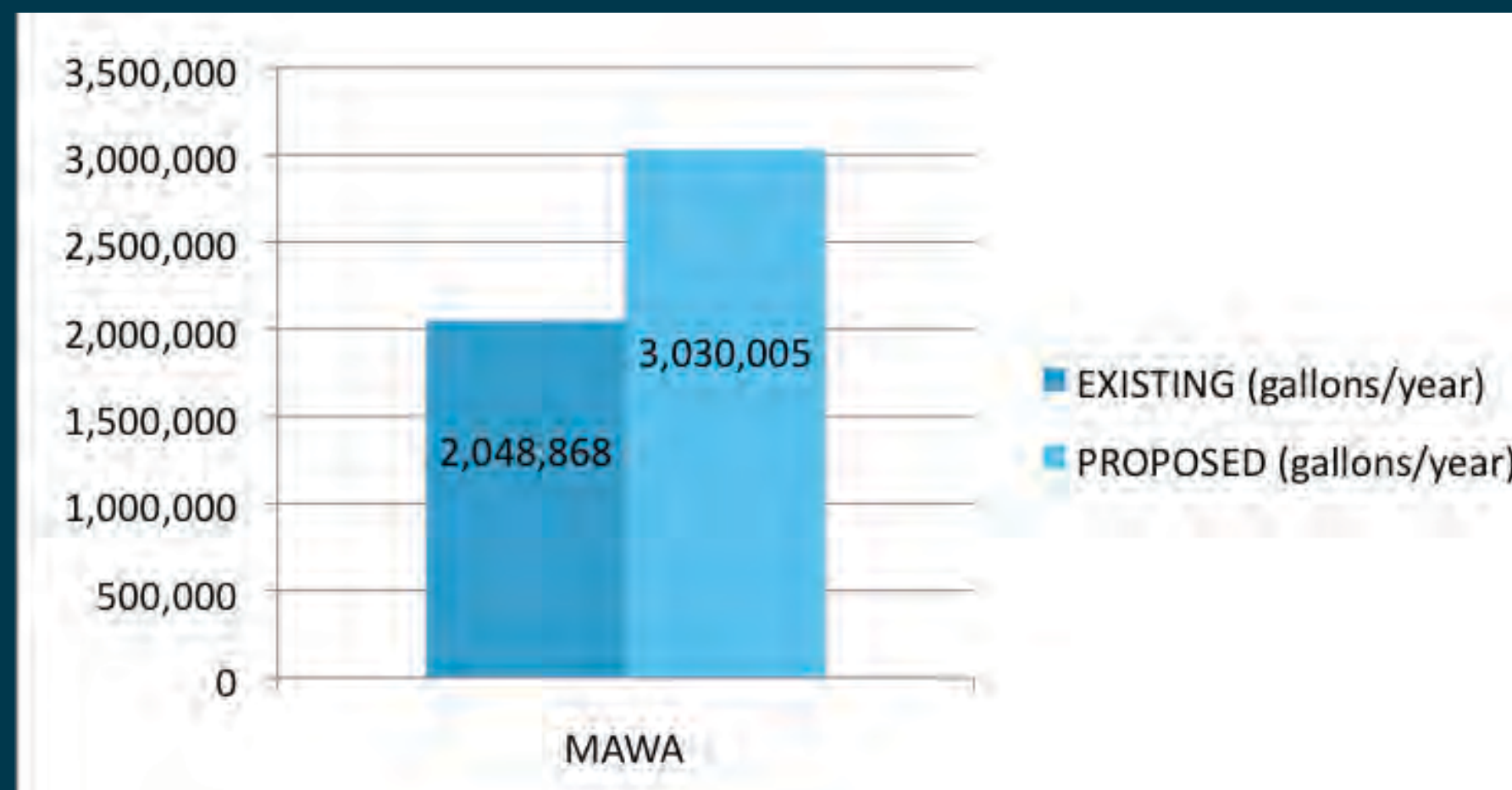
Existing Water Usage



Proposed Water Usage



Maximum Applied Water Allowance

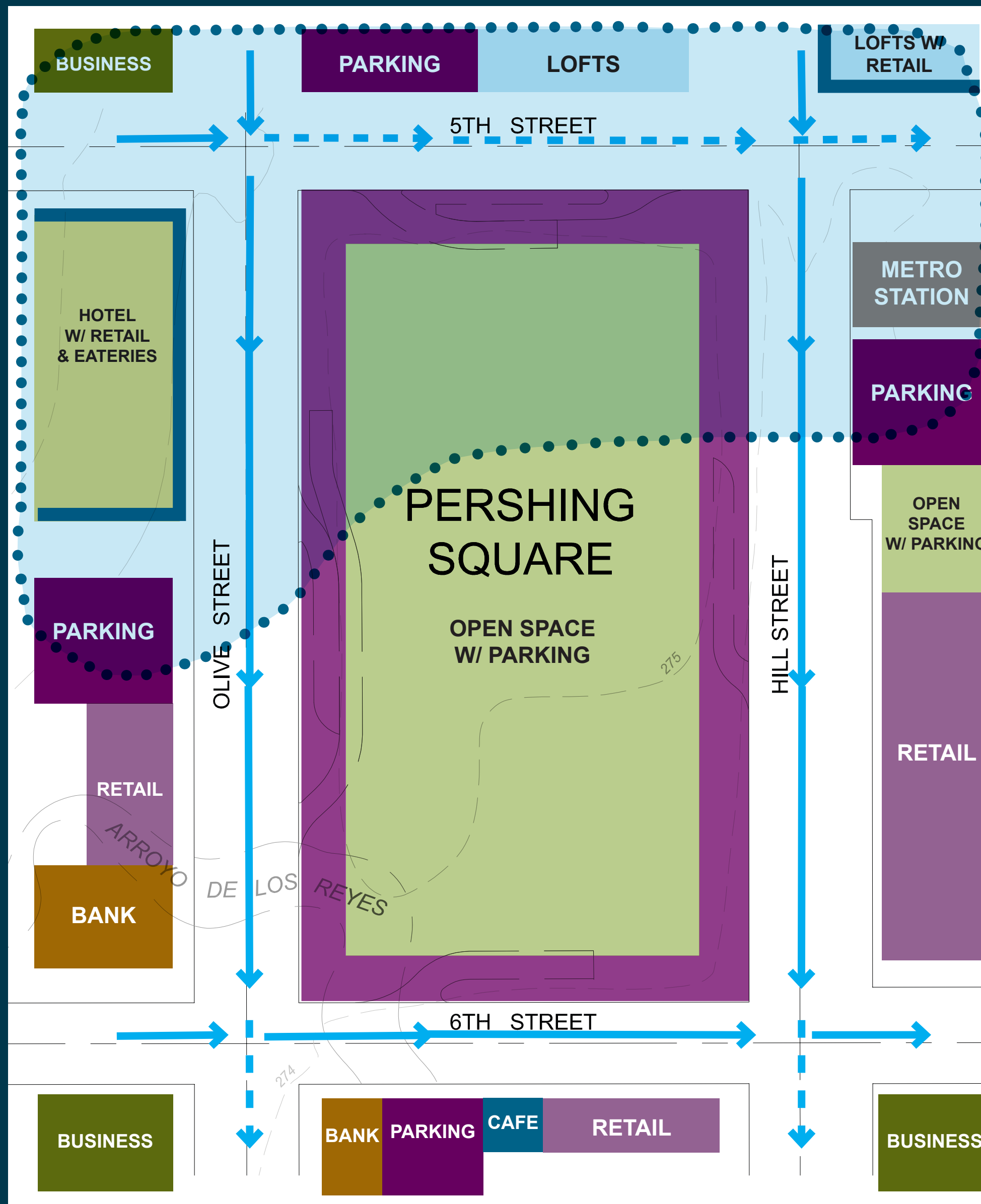


Estimated Total Water Use

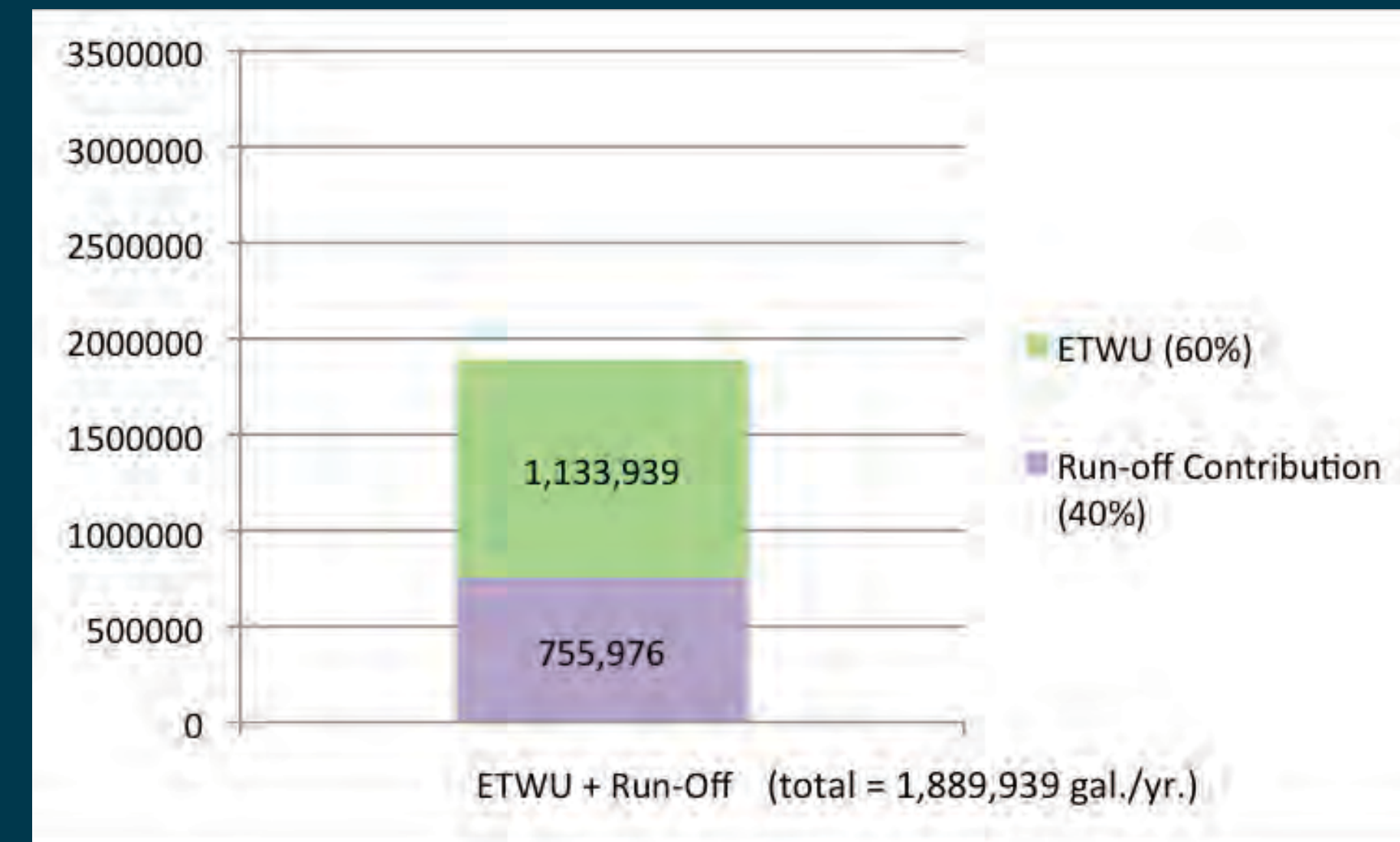


Water Calculations

Water Capture Zone



Water Usage (post captured water)



PERSHING SQUARE

Downtown Los Angeles